

# Revere & Chelsea



## Family & Community Directory of Resources



**Revere Public Schools**  
*Early Childhood Program*

# Table of Contents



Education:  
Early Childhood & Public School

Pages 5-9



Family Child Care

Page 10



After School Programs

Pages 10-11



Community Resources

Pages 12-18



Public Safety

Page 18



Dental Care

Pages 18-20



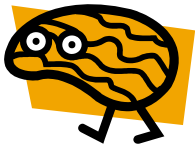
Hospital Based Dental Centers  
(Emergencies and Serious Problems)

Page 21



Physicians/Hospitals

Pages 21-22



Mental Health Services

Pages 22-23



Optometrist

Page 23



Housing Search Assistance

Page 24



Higher Education Resources

Pages 24-25



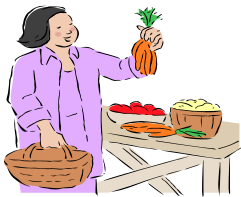
Legal Assistance

Pages 25-26



Transportation Assistance

Page 26



Food & Nutrition Resources

Page 27



Hotline Numbers

Page 28



# Education: Early Childhood & Public School

- **Adventures in Learning**

200 Winthrop Avenue Revere MA 02151  
781.853.0981

- **A Kangaroo's Pouch**

86 Chestnut Street Chelsea MA 02150  
617.884.5109

Contact Person: Jose G. Rivera

Email: [akpccp@comcast.net](mailto:akpccp@comcast.net)

- Open Year Round 7:15am-5:30pm
- Serves children from 15 months old to 6 years of age
- Teachers highly trained
- Staff certified in first aid & CPR
- Safely & carefully designed classrooms including computers
- Balanced & nutritious breakfast, lunch & snacks
- Family support
- Age appropriate children activities & class curriculum
- Resource room
- Accepts Vouchers and Private Pay Slots/Sliding fee scale

- **CAPIC After School Program**

9 Arlington Street Chelsea, MA 02150  
617.889.9929

Contact Person: Felix Perez

Email: [fperez@capicinc.org](mailto:fperez@capicinc.org)

- After-school program focusing on homework, arts and crafts, etc.
- Transportation provided at designated bus stops

- **CAPIC Child Development Center**

9 Arlington Street Chelsea, MA 02150  
617.889.9929 Fax: 617.889.3970

Contact Person: Lucia Londono

Email: [llondono@capicinc.org](mailto:llondono@capicinc.org)

- Serves children from 6 weeks to 7 years of age (after school programs)
- Open year round/Full time care
- High quality childcare services

- Healthy meals included
- Multicultural curriculum
- Privately owned playground
- Multicultural environment with Bilingual teachers (Spanish)
- Accepts Vouchers and Private Pay families
- After school classroom enrollment includes transportation, meals, access to computers, homework help and open during school vacations

- **CAPIC Head Start**

67 Crescent Avenue, Chelsea, MA 02150

617.889.5690 Fax: 617.889.4031

Contact Person: Joanne Stone-Libon

Email: [jstonelibon@capicinc.org](mailto:jstonelibon@capicinc.org)

- Offers a free comprehensive learning experience for low income families with children between the ages of three to five years of age
- Full day program option, Vouchers Accepted

- **Central Avenue Children's Center**

170 Central Avenue, Chelsea MA 02150

617.884.8432

Contact Person: Regina Ruggiero

Email: [CentralAve@hotmail.com](mailto:CentralAve@hotmail.com)

- **Chelsea Public Schools**

Business Office

500 Broadway, Chelsea Ma 02150

617.889.8361 Fax: 617.887.8361

Contact Person: Andrea Pulver

Email: [apulver@chelseama.gov](mailto:apulver@chelseama.gov)

- **Chelsea Parent Information Center**

John Silber Early Learning Center-99 Hawthorne St., Chelsea, MA 02150

Use Shurtleff Street Entrance

617.466.5500

- **Chelsea/Revere Family Network**

67 Crescent Avenue, Chelsea MA 02150

617.887.0076 Fax: 617.887.0121

Contact Person: Jeanette Velez

Email: [jvelez@capicinc.org](mailto:jvelez@capicinc.org)

Website (English): [http://www.capicinc.org/Eng/E\\_FamilyNetwork.html](http://www.capicinc.org/Eng/E_FamilyNetwork.html)

Página en Internet (Español): [http://www.capicinc.org/Spa/E\\_FamilyNetwork.html](http://www.capicinc.org/Spa/E_FamilyNetwork.html)

- The Family & Community Network provides universal strength-based education and support programs for families of children aged birth through early school age.

- Direct services include parenting education programs; playgroups; home visitation; family literacy activities; providing basic human needs such as clothing and food; support groups; information and referral services; community events.
- Supports also include local family centers and access to their lending libraries.
- Family Supports and Engagement prepares children to learn and connect families to resources through extensive community outreach, collaboration and coalition building.

- **Child Care Choices of Boston**  
105 Chauncy Street, Boston MA 02111  
617.348.6465  
Contact Person: Anne Corbin  
Email: [corbin@bostonabcd.org](mailto:corbin@bostonabcd.org)

- **Child Focus Center/BHCC**  
175 Hawthorn Street Chelsea, MA 02150  
617.228.3374 or 617.241.5464  
Contact Person: Chris King  
Email: [cfocus@bhcc.mass.edu](mailto:cfocus@bhcc.mass.edu)

- **Child Development Centers & Systems, Inc.**  
Malden Office  
389 Main St. 3<sup>rd</sup> Floor, Malden, MA 02148  
781.322.9100 Fax: 781.324.2482  
Contact Person: Glen Cunningham  
Email: [cdcs.gleenn@verizon.net](mailto:cdcs.gleenn@verizon.net)

- **Happy Days Nursery School**  
291 Park Avenue, Revere, MA 02151  
781.286.1166  
Contact Person: Carol Smith

- **Harbor Area Early Intervention Program**  
North Suffolk Mental Health Association  
130 Condor Street East Boston, MA 02128  
617.569.6560  
Contact Person: Deborah Eccleston
  - Specialized program serving families with children birth to three years old with developmental delays, risk for delays and/or established condition.
  - Home-based services include developmental evaluations, family support services, infant massage, infant mental health (attachment; social-emotional difficulties; interactional difficulties) services, short term counseling, resource and referral and service coordination.
  - Center-based services include Caregiver/infant or toddler groups; Parenting support and education groups; and Parent/Child playgroups in community locations.

- **John Silber Early Learning Center**  
99 Hawthorn Street, Chelsea, MA 02150  
617.889.8422 or 617.889.8423 Fax: 617.889.8425  
Contact Person: Jackie Bevere-Maloney  
Email: [beverej@chelsea.mec.edu](mailto:beverej@chelsea.mec.edu)

- **Kiddie Koop**  
283 Cushman Ave Revere, MA 02151  
781.284.8954  
Contact Person: Lucille Giso

- **Revere Community School**  
Revere High School ,101 School Street, Revere, MA 02151  
Phone: 781-333-2061 Ext 51425  
Contact: Fatou Fatty , Coordination  
Email: [ffatty@revere.mec.edu](mailto:ffatty@revere.mec.edu)  
Website: <http://www.revere.mec.edu/>  
*Office Hours* Monday - Thursday: 12:00 pm - 8:00 pm Friday 10:00 am-3:00 pm

#### **Programs from September to June**

- English for Speakers of other language (ESOL) (Level 1-3) classes in the evenings
- High School Equivalency Diploma (HiSET)
- Childcare services are available for children 1-12 year old for free. Services must be requested at time of registration

#### **Become an Instructor**

- RCS is working to offer education and recreational services for our residents. If you have a course idea, we would love to hear about it.

#### **Volunteer today**

- Revere Community School invites you to volunteer in all aspect of our program. Help others become fluent in the English language, teaching a computer class and others.
- Help High school and college student are encouraged to apply.

#### **Partnership**

- Revere Community School wants to promote and maintain partnerships between the program, community groups, higher institutions of learning, corporate partners, business members and community members. We encourage all members and businesses of the community to become a partner. Be part of the new change

- **Revere Public Schools**  
101 School Street, Revere, MA 02151  
781.286.8222  
Web Site: [www.revere.mec.edu](http://www.revere.mec.edu)



- **Revere Public School Early Childhood Program**

176 Garfield Avenue, Revere MA 02151

781.485.2719 or 781.286.8305

Contact Person: Maria Sacco

Web Site: <http://teacherweb.com/MA/RevereDistrict/EarlyChildhood/ap1.stm>

- Developmentally appropriate practices
- Monday – Friday program/ 2 ½ hours per day
- Blueprint Literacy and Creative Curriculum programs are used to enhance social, physical, cognitive, and emotional development and early reading and writing skills.
- Emphasis on receptive and expressive language development.
- PACT time invites parents to participate in their child’s classroom on a regular basis for a strong home-school connection.

- **Revere Public School Early Childhood Resource Center**

176 Garfield Avenue, Revere MA 02151

781.485.8452

Contact Person: Roxanne Aiello

- Features a variety of resource materials for the early childhood community.
- The center contains a rich assortment of developmentally appropriate education materials for young children
- Materials are available on loan to early childhood students & teachers, administrators, childcare providers, early childhood parents and anyone interested in the care and education of young children.
- Please call for visiting times and appointments

- **Revere Public Schools Parent Information Center**

56 Bennington Street, Revere, MA 02150

781.485.8453



# Family Child Care

- **Associated Early Care and Education**

80 Everett Avenue Suite 215, Chelsea MA 02150

617.889.0634

Contact Person: Joanna Ochoa

Email: [jochoa@earlycareandeducation.org](mailto:jochoa@earlycareandeducation.org)

- Provides referrals to Licensed Child Care Providers

- **Child Development & Education**

100 Everett Avenue Unit 15 Chelsea, MA 02150

617.889.9731

Contact Person: Elizabeth Garcia

Web site: <http://www.cdedu.us/index.html>

Please refer to the Department of Early Education and Care website for additional listings of family childcare in Revere and Chelsea.

Web site: [www.mass.gov/eec](http://www.mass.gov/eec)



# After School Programs

- **CAPIC After School Program**

9 Arlington Street Chelsea, MA 02150

617.889.9929

Contact: Felix Perez

Email: [fperez@capicinc.org](mailto:fperez@capicinc.org)

- After-school program focusing on homework, arts and crafts, etc.
- Transportation provided at designated bus stops

- **Revere Public School Afterschool Program**

In all six Revere Public elementary schools

781.485.2724

Contact: Program Administrator, Lilly Guido

- School year program (5 days/week) dismissal – 6:00 PM
- Grades K-5
- Offers a bridge to the school day through positive peer interactions, academic enrichment and fun daily exercise

- **The Salvation Army Kids' Club**

258 Chestnut Street Chelsea, MA 02150

617.884.3836

Contact: Allison Barbieri

Email: [allison.barbieri@use.salvationarmy.org](mailto:allison.barbieri@use.salvationarmy.org)

- After-school program for children in Kindergarten through age 12
- Transportation during the school year from the Mary C. Burke Elementary Complex
- Within walking distance from the middle schools
- Accepting state voucher from Child Care Choices of Boston
- EEC subsidy may be available



# Community Resources

- **American Red Cross**

617.357.0700

Provides financial assistance, including security deposit, first month's rent, essential furniture and more for victims of natural disasters

- **ARCH (Access to Resources for Community Health)**

300 Ocean Avenue, 5<sup>th</sup> Floor, Revere, MA 02151

781.485.6477

- An electronic health information and resource center
- Free, on-site access to the internet and free training on internet search skills

- **Boy Scouts of America**

Boston Minuteman Council

411 Unquity Road, Milton, MA 02186

617.615.0004

Web Site: <http://www.bsaboston.org>

- **CAPIC (Community Action Programs Inter-City, Inc.)**

100 Everett Avenue, Unit 14, Chelsea, MA 02150

617.884.6130

Web Site: <http://www.capicinc.org>

- Multi-service agency providing housing and fuel assistance, and childcare options
- HEARTWRAP Program, Weatherization Program, Housing Program
- Outreach and Advocacy Program
- Domestic Violence Program

- **Centro Latino De Chelsea**

617.884.3238

Web Site: <http://www.centralatino.org>

Provides social and educational services focused on improving the quality of life for Latino families living in Chelsea and surrounding communities

- **Chelsea Adult Education, Inc.**

148 Shawmut Street Chelsea, MA 02150

- Adult education classes to Chelsea residents and residents in surrounding communities
- Four levels of ESL classes and three levels for GED preparation

- **Chelsea ASAP**  
100 Everett Avenue, Chelsea, MA 02150  
617.884.6829  
Offers alcohol/substance abuse treatment, Employee Assistance Programs, Driving Under the Influence programs, and Batterers Intervention programs
- **Chelsea Career Source**  
121 Webster Avenue Chelsea, MA 02150  
617.887.1222 Web Site: <http://www.yourcareersource.com>
  - Career center assisting people to find employment
- **Chelsea City Hall**  
500 Broadway Chelsea, MA 02150  
617.466.4000
- **Chelsea Community Connections Coalition**  
113 Hawthorn Street, Chelsea, MA 02150  
617.889.7100
  - Provides families with children's clothing, equipment, and toys
  - Offers fieldtrips, a community garden, play groups, and parenting support
- **Chelsea Community YMCA**  
207 Shurtleff Street Chelsea, MA 02150
  - Offers a variety of programs to children of all ages
  - Programs foster spiritual, intellectual, physical and social values for children
- **Chelsea Human Services Collaborative**  
300 Broadway Chelsea, MA 02150  
617.889.6080 Web Site: <http://www.chelseacollab.org>
  - Community organizing in public and affordable housing, parents of school children, voter registration and mobilization, latino immigrants ,leadership training and workshops
- **Chelsea Public Library**  
569 Broadway, Chelsea, MA 02150  
617.466.4350  
Contact Person: Sara Gray  
Web Site: <http://www.chelseama.gov>
  - Lends books, videos, periodicals, museum passes, books on tape, and CDs
  - Provides free internet access and personal computer workstations to patrons
- **Chelsea Little League**  
243 Webster Avenue Chelsea MA 02150  
617.889.2750
  - All-volunteer organization that relies on support from the community to provide services
  - Co-ed ages 5-12

- **Chelsea-Revere-Winthrop Elder Services**

300 Broadway, Chelsea, MA 02150  
617.884.2500

- Offers services to the elderly, including Meals On Wheels

- **Children's Museum**

300 Congress Street, Boston, MA  
617.426.6500

- **Community Access Revere TV**

Channels 8, 9, & 10

781.426.9498

Executive Director Robert Dunbar

Web Site: <http://www.reveretv.org>

- **Department of Children and Families (DCF)**

45 Spruce Street Chelsea, MA 02150  
617.660.3400

- **Department of Transitional Assistance (DTA)**

300 Ocean Avenue Revere, MA 02151  
781.286.7800

- **Girl Scouts of Eastern Massachusetts**

Boston, MA 02116-6229

617.482.1078

800.882.1662 - Local Toll Free Phone

E-mail: [info@girlscoutseasternmass.org](mailto:info@girlscoutseasternmass.org)

Web Site: <http://www.girlscoutseasternmass.org>

- **Harbor Area Early Intervention Program**

North Suffolk Mental Health Association

130 Condor Street East Boston, MA 02128

Contact Person: Deborah Eccleston

617.569.6560

- Specialized program serving families with children birth to three years old with developmental delays, risk for delays and/or established condition.
- Home-based services include developmental evaluations, family support services, infant massage, infant mental health (attachment; social-emotional difficulties; interactional difficulties) services, short term counseling, resource and referral and service coordination.

- Center-based services include Caregiver/infant or toddler groups; Parenting support and education groups; and Parent/Child playgroups in community locations.

- **HarborCOV**

617.884.9909

- Offers confidential support groups, advocacy, and emergency shelter for victims of domestic violence

- **Intergenerational Literacy Program**

John Silber Early Learning Center

99 Hawthorn Street Chelsea, MA 02150

617.889.2375

Contact Person: Barbara Kroll-Sinclair

- Classes offered to parents to improve their reading, writing, and English and to support their children's learning

- **Jordan Boys and Girls Club of Chelsea**

30 Willow Street, Chelsea MA 02150

617.884.9435

- Provides after school youth programming in specific core areas

- **Massachusetts Adult Literacy Hotline**

1.800.447.8844

- **Museum of Fine Arts**

465 Huntington Avenue, Boston,

617.267.9300

- Mon-Tues                    10am - 4:45pm
- Wed-Fri                    10am - 9:45pm
- Sat & Sun                    10am - 4:45pm

- **Museum of Science**

Science Park, Boston

617.589.2500

- Sat – Thurs                    9am - 5pm
- Fri                                9am - 9pm

- **New England Aquarium**

Central Wharf, Boston

617.973.5200

- Mon-Fri                        9am-5pm
- Sat, Sun & Holiday        9am-6pm

- **Raising A Reader MA**

9B Hamilton Place 3<sup>rd</sup> Floor, Boston MA 02180

617.292.BOOK

Web Site: <http://www.raisingareaderma.org>

- Provides high quality, age and culturally appropriate books via a book bag lending program to families on a weekly basis
- Partners with teachers, home visitors, playgroups, and family childcare providers who serve children ages 0-5. Currently we are working with CAPIC Head Start, the Revere Public Schools Early Childhood program at the Garfield, Lincoln and Beachmont Schools, and 30 family childcare providers through Child Development and Education (CDE) and Associated Care and Early Education.
- Mission: We aim to give every child an equal opportunity for achievement by engaging low-income parents in a routine of daily book sharing from birth to age five, fostering healthy brain development, parent-child bonding, and the early literacy skills essential for school success.

- **Revere Cares**

A Drug Free Communities Program  
 300 Ocean Avenue, Revere MA 02151  
 781.485.6132  
 Contact Person: Kitty Bowman

- **Revere Community School**

Revere High School ,101 School Street, Revere, MA 02151

Phone: 781-333-2061 Ext 51425

Contact: Fatou Fatty , Coordination

Email: [ffatty@revere.mec.edu](mailto:ffatty@revere.mec.edu)

Website: <http://www.revere.mec.edu/>

*Office Hours* Monday - Thursday: 12:00 pm - 8:00 pm Friday 10:00 am-3:00 pm

**Programs from September to June**

- English for Speakers of other language (ESOL) (Level 1-3) classes in the evenings
- High School Equivalency Diploma (HiSET)
- Childcare services are available for children 1-12 year old for free. Services must be requested at time of registration
- 

**Become an Instructor**

- RCS is working to offer education and recreational services for our residents. If you have a course idea, we would love to hear about it.

**Volunteer today**

- Revere Community School invites you to volunteer in all aspect of our program. Help others become fluent in the English language, teaching a computer class and others.
- Help High school and college student are encouraged to apply.

**Partnership**

Revere Community School wants to promote and maintain partnerships between the program, community groups, higher institutions of learning, corporate partners, business members and community members. We encourage all members and businesses of the community to become a partner. Be part of the new change

- **Revere City Hall**

300 Broadway, Revere, MA 02151



781.286.8100

- **Revere Little League, Inc.**  
205 Winthrop Avenue, Revere MA 02151  
781.286.0012

- **Revere Parks & Recreation**  
150 Beach Street Revere, MA. 02151  
781.286.8190

- Various activities for both adults children

- **Revere Public Library**  
179 Beach Street Revere, MA 02151  
781.286.8380 ext. 2

Web Site: <http://www.noblet.org>

- Lends books, videos, periodicals, museum passes, books on tape, and CDs
- Provides free internet access and personal computer workstations to patrons
- Calendar of events: <http://www.reverepubliclibrary.org>

- **Revere Public School Early Childhood Resource Center**  
176 Garfield Avenue, Revere MA 02151  
781.485.8452

Contact Person: Roxanne Aiello

- Features a variety of resource materials for the early childhood community.
- The center contains a rich assortment of developmentally appropriate education materials for young children
- Materials are available on loan to early childhood students & teachers, administrators, childcare providers, early childhood parents and anyone interested in the care and education of young children.
- Please call for visiting times and appointments

- **ROCA, Inc.**  
101 Park Street Chelsea, MA 02150  
617.889.5210

- Programs and activities for young people, including ESL, GED Prep classes, mentoring, and tutoring

- **Salvation Army**  
258 Chestnut Street Chelsea, MA 02150  
617.884.0260

- Provides clothing, food vouchers, essential furniture, and counseling in extreme emergency situations

- **Showcase Cinema-Revere**  
565 Squire Road Revere, MA 02151  
781.286.1660

- **Woman Encouraging Empowerment Inc. (WEE)**  
50 Walnut Avenue, Revere MA 02151

Mailing address P.O. Box 13, Revere, MA 02151

781.284.4251

Contact Person: Gihan Suliman, Program Director

Email: [info@weewomen.org](mailto:info@weewomen.org)

Web Site: <http://www.weewomen.org>

Programs include: Organizing/Leadership Development, Domestic Violence Prevention, English for Speakers of other Languages, Advocacy and Support to immigrant women and children.

- Serves Revere, Winthrop, Chelsea and East Boston
- Women support groups once a month
- English classes in the morning and evening



## Public Safety

- **Chelsea Police Department**  
19 Park Street, Chelsea MA 02150  
Business: 617-466-4855 Fax: 617-466-4850  
Chief of Police: 617-466-4810
- **Revere Police Department**  
400 Revere Beach Parkway, Revere MA 02151  
Business: 781-284-1212

**EMERGENCY POLICE & FIRE 911**



## Dental Care

- **Affordable Family Dental**  
59 Washington Avenue Chelsea MA 02150  
617.889.2668
  - General Dentistry
  - Speak Greek, Russian, Spanish
  - Accepts Mass Health

- **Dr. Baskies**  
109 Washington Avenue, Chelsea Ma 02150  
617.884.2428
  - Accepts Mass Health
  
- **Becker & Silvius**  
34 Shirley Avenue Revere, MA 02151  
781.286.1818
  - Accepts Mass Health
  
- **Broadway Family Dental**  
373 Broadway Chelsea MA, 02150  
617.887.0600
  - Accepts Mass Health
  - Speaks Spanish
  
- **Dr. Gennaro L. Cataldo, D.M.D., M.S.**  
54 Newhall Street  
Revere, MA 02151  
781.284.4656
  - Does not accept Mass Health
  
- **Cedarwood Dental**  
252 Squire Road Revere, MA 02151  
781.286.1818
  - Accepts Mass Health
  
- **Dr. Adrian J. Costanza D.D.S.**  
Orthodontics Exclusively  
48 Newhall Street  
Revere, MA 02151  
781.289.8050
  - Accepts Mass Health
  
- **Dr. Craig A. Constanza, D.M.D.**  
General Dentist  
48 Newhall St.  
Revere, MA 02151  
781.284.2090
  - Accepts Mass Health
  
- **Chelsea School Dental Center (located inside the Williams Middle School)**  
180 Walnut Street Chelsea, MA 02150  
617.889.2864
  - Sees only children living in Chelsea
  - Accepts Mass Health

- Speaks Spanish
- **Chelsea Dental Care**  
61 Everett Avenue Chelsea MA, 02150  
617.887.9944
  - Accepts Mass Health
  - Speaks Spanish
- **Chelsea Family Dental**  
38 Central Avenue Chelsea, MA 02150  
617.887.1400
  - Accepts Mass Health
  - Speaks Spanish
- **Dental Health International**  
100 Everett Avenue, Chelsea MA 02150  
617.884.4444
  - Children age 4 and older
  - Speaks French, Spanish
- **Dr. Edward D'Eramo**  
69 Malden Street Revere, MA 02151  
781.284.3200
  - Does NOT accept Mass Health
- **Family Dental Care**  
357 Broadway Chelsea, MA 02150  
617.887.0600
  - Accepts Mass Health
  - Speaks Spanish
- **Kool Smiles**  
Located at the Home Depot Center in Chelsea  
617.889.0177
  - Serving patients from first tooth through 20 years
- **Northgate Dental Center**  
603 Broadway Revere MA, 02151  
781.289.3600
  - Does NOT accept Mass Health
- **Smile Revere**  
78 School Street Revere MA, 02151  
781.289.0839
  - Accepts Mass Health



## Hospital Based Dental Centers for Emergencies and Serious Problems

- **Boston Medical Center**  
850 Harrison Avenue 5<sup>th</sup> floor Boston, MA 02118
  - Accepts Mass Health
- **Children's Hospital Department of Dentistry**  
300 Longwood Avenue Boston, MA 02115  
617.355.6571
  - Accepts Mass Health
  - \*\*Note: Accepts Infants
- **Franciscans Children's Hospital Dental**  
30 Warren Street Brighton, MA 02135  
617.254.3800 Ext. 3790
  - Accepts Mass Health
- **Tuft University Dental School**  
1 Kneeland Street Boston, MA 02118  
617.636.6971
  - Accepts Mass Health

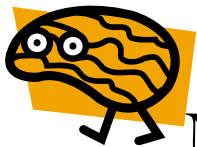


## Physicians/Hospitals

- **Alliance Medical Group**  
385 Broadway, Revere MA 02151  
781.289.6117
- **Dr. Babyan**  
365 Main Street, Winthrop, MA 02152

617.846.5352

- **Beth Israel Deaconess Healthcare**  
1000 Broadway, Chelsea, MA 02150  
617.660-6000
- **East Boston Neighborhood Health Center**  
Gove Street, East Boston, MA 02128  
617.569.5800
- **James G. Guerrini, MD**  
385 Broadway, Revere, MA 02151  
781.289.6117
- **Melrose Wakefield Hospital**  
585 Lebanon Street, Melrose, MA 02155  
781.979.3000
- **MGH Chelsea Health Center**  
151 Everett Avenue, Chelsea, MA 02150  
617.889.8515
- **MGH Revere Health Center**  
300 Ocean Avenue Revere MA 02151  
781.485.6000
- **Revere-Winthrop Pediatrics Inc.**  
280 Beach Street, Revere, MA 02151 Revere-Winthrop Pediatrics Inc.  
781.289-6581
- **Dr. Michael Sandburg**  
111 Everett Avenue, Chelsea, MA 02150  
617.889.6700
- **Dr. Shah**  
365 Main Street, Winthrop, MA 02152  
617.846.5352



## Mental Health Services

- **Health and Education Services, Inc.**  
800 Cummings Center, Suite 266T, Beverly, MA 01915  
978.921.1190
  - Provides counseling, assessments, referrals, and comprehensive mental health services

- **North Suffolk Mental Health**
  - 301 Broadway, Chelsea, MA 02150 617.889.3300
  - 265 Beach Street, Revere, MA 02151 781.289.9331
    - Provides counseling, assessments, referrals, and comprehensive mental health services



# Optometrist

- **Janis Cotter O.D.**  
80 Broadway Revere MA, 02151  
781.289.7929
- **Dr. Eisenburg**  
42 Woodside Avenue, Winthrop, MA 02152  
617.539.0909
- **Dr. Matthew Kaim**  
50 Jefferson Street Winthrop MA 02150  
617.846.1734
- **James Lee, O.D.**  
333 Broadway Revere MA 02151  
781.286.0785  
617.846.7950 - Winthrop Office
- **New England Eye**  
930 Commonwealth Ave- Suite 2A Boston MA 02215  
617.262.2020
- **Northgate Eye Association**  
339 Squire Road Revere MA 02151  
781.289.5900
- **Dr. Deborah Wayne & Associates**  
380 Broadway Chelsea, MA 02150  
617.884.1222



## Housing Search Assistance

- **Chelsea Neighborhood Developers**  
4 Gerrish Avenue, Chelsea MA 02150  
617-889-1375  
[www.ChelseaND.org](http://www.ChelseaND.org)
- **Chelsea Public Housing**  
54 Locke Street Chelsea MA 02150  
617.884.5617
- **MASS Access Program**  
18 Tremont Street, Suite 401 Boston, MA 02108  
617.742.0820 Fax: 617.742.3953  
Web Site: [www.massaccesshousingregistry.org](http://www.massaccesshousingregistry.org)
  - The MASS Access Program is a statewide listing of accessible housing units.
  - This free database is available on the Internet
- **Metropolitan Boston Housing Partnership, Inc.**  
125 Lincoln Street, 5th Floor Boston, MA 02111  
617.425.6700 or 1.800.272.0990
- **Revere Housing Authority**  
70 Cooledge Street, Revere, MA 02151  
781.284.4394
- **South Middlesex Opportunity Council, Inc.**  
300 Howard Street Framingham, MA 01702-8313  
508.620.2675 or 1.800.724.7662



## Higher Education Resources

- **Bunker Hill Community College-Chelsea Campus**  
175 Hawthorne Street, Chelsea MA 02150



617.228.2101 Web Site: <http://www.bhcc.edu>

- Two year community college offering degree and certificate programs

- **North Shore Community College**

300 Broad Street Lynn MA 01901-1595

781.593.6722 Web Site: [www.northshore.edu](http://www.northshore.edu)

- Two year community college offering degree and certificate programs

- **Salem State University**

352 Lafayette Street Salem MA, 01970

978.542.6000 Web Site: [www.salemstate.edu](http://www.salemstate.edu)

- Four year college offering bachelor degree programs of study

- **Urban College**

178 Tremont Street Boston, MA, 02111

617.292.4723 Web Site: [www.urbancollege.edu](http://www.urbancollege.edu)

Two year college offering degree and certificate programs



# Legal Assistance

- **Catholic Charities Immigration Services**

75 Kneeland Street, 8th Floor Boston MA 02111

617.451.7979

- Represents aliens in Asylum proceedings.
- Nominal fees charged for representation
- Phone-in legal clinic
- Family visa and battered immigrant spouse petitions

- **Greater Boston Legal Services**

350 Broadway, Chelsea, MA 02150

617.884.0595

- Free civil (non-criminal) legal services to low income families

- **Lawyer Referral Service**

20 West Street, Boston MA 02111

1.800.392.6164

- **Legal Advocacy and Resource Center, Inc. (LARC)**

197 Friend Street, 9<sup>th</sup> Floor Boston MA 02114

617.371.1188

- Operates a free legal hotline to assist needy
- Individuals who think they have a legal problem by

- Providing quality legal information and advocacy, and by making referrals to legal and social service agencies.
- **Massachusetts Justice Project**  
1.800.639.1209
  - Provides information and advice to low income clients
  - Regarding a range of legal issues.
- **Suffolk University Legal Services**  
350 Broadway, Chelsea MA 02150  
617.884.7568
  - Provides free legal information and assistance



## Transportation Assistance

- **Patriot Taxi and Limousine Service**  
737 Broadway, Revere MA 02151  
781-284-2222
  - Provides transportation to surrounding communities
- **The Ride/MBTA**  
Office for Transportation Access  
10 Park Plaza Room 4730 Boston MA, 02116  
617.222.5123 or 1.800.533.MBTA  
Web Site: [www.mbta.com](http://www.mbta.com)
  - The ride operates 365 days per week from 6:00A.M.-1:00A.M.
- **TLP Transportation Services**  
Winthrop MA 02150  
617.846.2624  
Contact Person: Marilyn Estrada
  - Provides transportation to surrounding communities



# Food & Nutrition Resources

- **First Congregational Church Food Pantry**

230 Beach Street, Revere MA 02151

781-284-4158

Wednesdays from 7-8:30

- **Food Stamp Hotline**

Monday-Friday 9 am – 5 pm

1-800-645-8333

- **ROCA Food Pantry**

101 Park Street

Chelsea MA 02150

617-889-5210

Bread is distributed Mondays, Wednesdays, and Fridays @ 12:30 pm

Food Pantry is open the third Tuesday of the month @ 8:30 am

- **St. Lukes Food Pantry/Food Kitchen**

201 Washington Street, Chelsea MA 02150

617-884-4278

Food Pantry opens Saturdays 9-12 by appointment only

Food Kitchen open Saturdays 9-12, hot nutritious breakfast and lunch

Served free of charge

- **The Salvation Army Food Pantry**

258 Chestnut Street, Chelsea MA 02150

617-884-0260

Operates first and third Monday of the month from 10-2 pm.

- **WIC (Women, Infants, and Children Program)**

Chelsea WIC- 151 Everett Avenue, Chelsea MA 02150

Revere WIC- 300 Ocean Avenue, Revere MA 02151

Charlestown WIC- 73 High Street, Charlestown MA 02129

Phone: 617-887-4340

Phone: 781-485-6040

Phone: 617-724-8198

Provides FREE healthy foods, nutrition education, breastfeeding support, and much more to pregnant women, postpartum women, and children under age five.



# Hotline Numbers

- **Alcohol and Drug Hotline**  
24 hours a day 7 days a week  
1-800-327-5050
- **Car Safety**  
Massachusetts Passenger Safety Program  
1-800-CAR-SAFE
- **Child Abuse and Neglect Hotline**  
24 hours a day 7 days a week  
1-800-792-5200
- **Domestic Violence Hotline**  
24 hours a day 7 days a week  
1-877-785-2020  
1-888-743-5754
- **Elder Abuse Hotline**  
1-800-922-2275
- **National Runaway Switchboard**  
24 hours a day 7 days a week  
1-800-621-4000
- **Parental Stress Hotline**  
24 hours a day 7 days a week  
1-800-632-8188
- **Poison Control**  
24 hours a day 7 days a week  
1-800-222-1222